

EWD-RL-J2 Elevator Weighing Device

System Introduction (V1.1)

● **Declaration:** In any case, our part is only responsible for the product own quality within the warranty period.

● **Description:**

- 1.State Indication — Flickering: About “Once per Second”;
- 2.Button Operation — Press: Press and release soon; Hold: Press constantly;
- 3.Relay — Keep the state of Picking-up in the period of system being .



● **Main Features:**

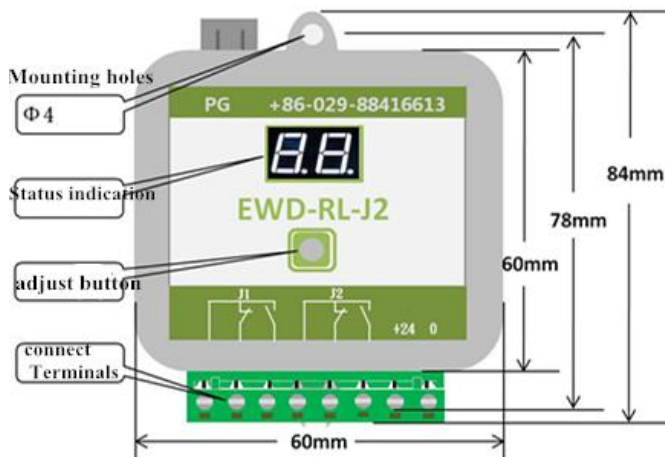
- 1.The system is of the structure of sensor with the domination of loading cell and controller, which can be installed at the car-side rope hitch;
2. Directly outputting full-load or overload signal depending on the change of elevator car payload;
3. Simple adjustment, high precision of measurement and quick and easy installation.

● **Technical Specifications:**

1. Application Range	Being applicable to all elevators with payload of 500 kg~20000 kg for full-load and overload signal (Depending on loading sensor with the options of 1.5tons/3T/5T)
2. Sensitivity	For the elevator with rated load of 1 ton, it is 5Kg
3. System Error	≤1.5%(5~40℃)
4. Output Mode	Switching Signal: Full-load and overload Dynamic Close and Dynamic Open contact
5. Operation Temperature	-25~55℃
6. Power Source	DC 24V(±10%), Operating current for the whole set≤100mA


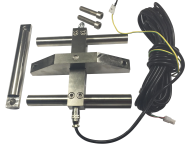

◆*: Intensity exceeding the above listed parameter limits may cause the system abnormality or its permanent damage.

● **Product Appearance, Installing Method and Relevant Structure**

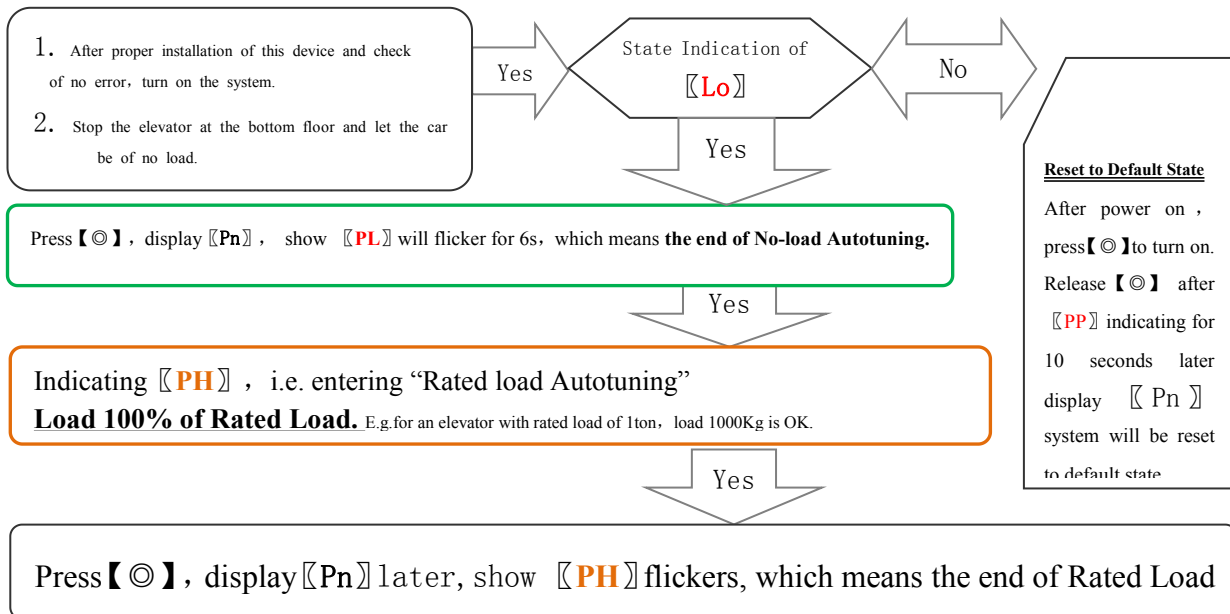


Description	
PG	Connect load sensor Button, use for adjust
	L0 No adjust
	J0 Load <90%Rated load(J1,J2 relay is released)
	J1 Load ≥90%Rated load(J1 rated relay is closed)
	J2 over load Indicator light(J2 relay is closed)
Status indication	
PJ.1~3	J1 Rated load output
PJ.4~6	J2 over load output
PJ.7~8	System power supply DC24V/100mA

● Sensor selection and installation:

Load sensor	Model	Description	Size and install method
	EWD-GA	Standard “Disc” type Intelligent loading Sensor	SEE Photo
	EWD-GB	Standard character “王” tension sensor [EWD-GB]	See photo
	EWD-GD	Standard character “—” load sensor	See photo

● System Adjustment:



After the system debugging is completed, during normal operation, press and hold [Lo], [J1] / J2 alternately flashing, while J1 / J2 alternately output.

times the load multiplier to modify the operation: (need to debug a good system to operate)

1. system Power off;
2. press 【◎】 power-on, show 【PP】 released: (Note: press 【◎】 10 Seconds, over Seconds
3. system will clear the existing data back to the factory state)
4. During Show 【Pd】 and 【01】 enter Full load、over load Multiplication mode, and show number 【01】 is the multiplier of the rated load.
5. During show 【01】 flicker, press 【◎】, Multiplication will increase, until 【30】 later, Will loop back 【01】 Start to increase again。 After reaching the desired multiplier, press 【◎】, keep 2-3 seconds, display 【Pn】 Remember and save the value, Into normal mode of operation.
 (exp: For already has the amount of memory learning 1000Kg elevator, 【Pd】The parameter is modified to 5, choose 5 Multiply, full load 90% x 5000Kg; over load 100% x 5000Kg.)
 (Note: system default 【Pd】 ,parameter 【01】 it means not increase, 【30】 means 30 Multiply, Use this parameter carefully)



Return to normal working condition

● Description of Other Indication States:

	Display Code	Implication	Solution
1	YS	System Startup	
2	PC	Sensor Resetting	
3	PP	Get into the status of operation parameters modification	
4	Lo	Ready for Autotuning Operation	
5	PL	No payload is detected by sensor	(Static Displaying represents preparative status, twinkling displaying for the end of testing)
6	PH	Self - learning parameters	
7	Pn	Memory is complete	

● Promise

1. If this system appears any quality problem of product itself in 1 year after delivery, it will be replaced freely (damage of the product seal will not be dealt with) .
2. Any system abnormality in adjustment or operation, please contact our company directly.

● Others

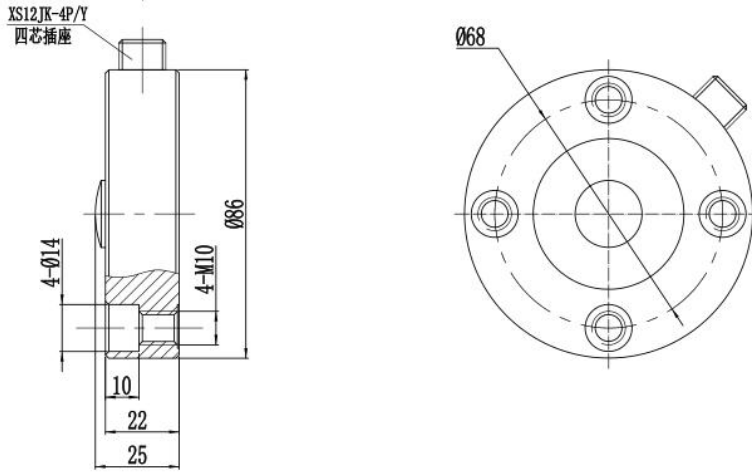
Packing List	Controller of EWD-RL-J2 Elevator Loading Device	1	Type EWD-GDH: sensor and its accessories	1Set
	Screw Sets M4 X 40	2 Sets	System Instruction Manual	1 Copy

Attached document:

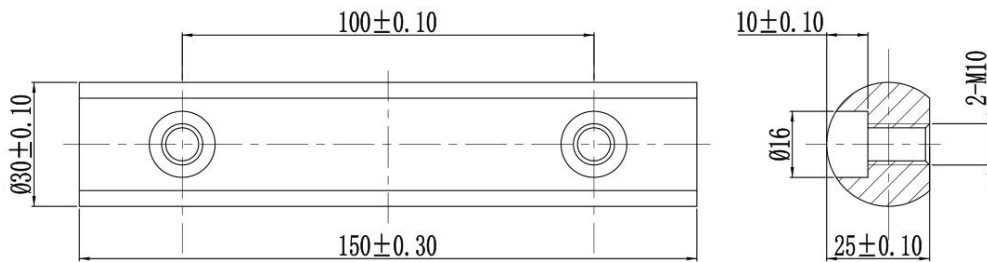
Load cell / tension sensor dimensions and installation

1. EWD-GA “Standard “Disc” type Intelligent loading Sensor size and installation method

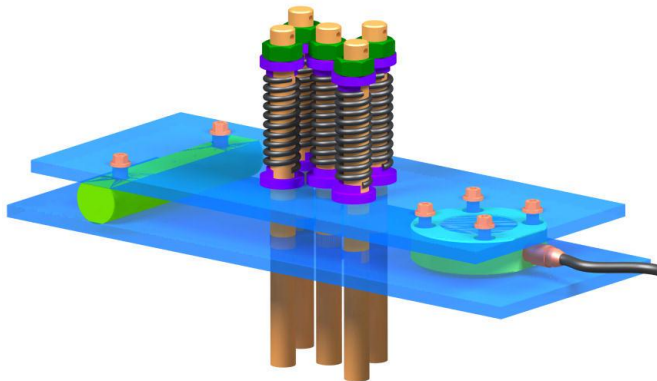
1.1 size



Bar size chart



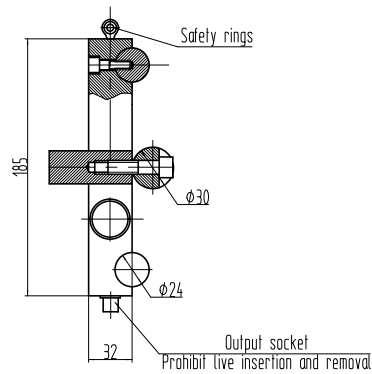
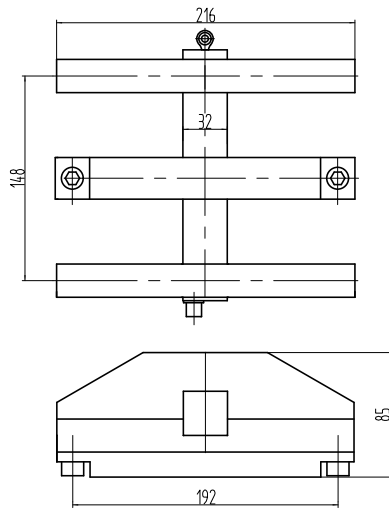
1.2 install method



2. EWD-GB Standard character “王” tension sensor size and installation method

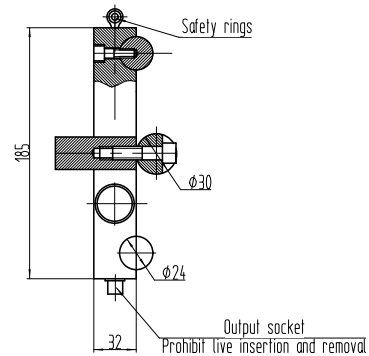
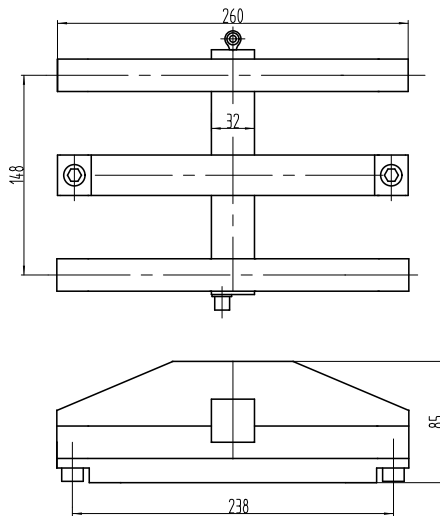
3. 2.1 Size of load sensor

2.1.1 The range is 2T size



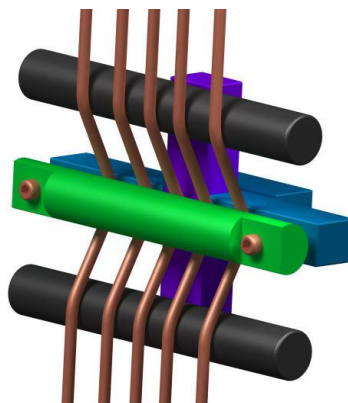
Note: the installation must use $\theta 6$ wire rope link safety ring and solid in the tractor nail to prevent the elevator installation and commissioning when the sensor off, to confirm personal safety.

2.1.2 The range is 5t size.



Note: the installation must use $\theta 6$ wire rope link safety ring and solid in the tractor nail to prevent the elevator installation and commissioning when the sensor off, to confirm personal safety.

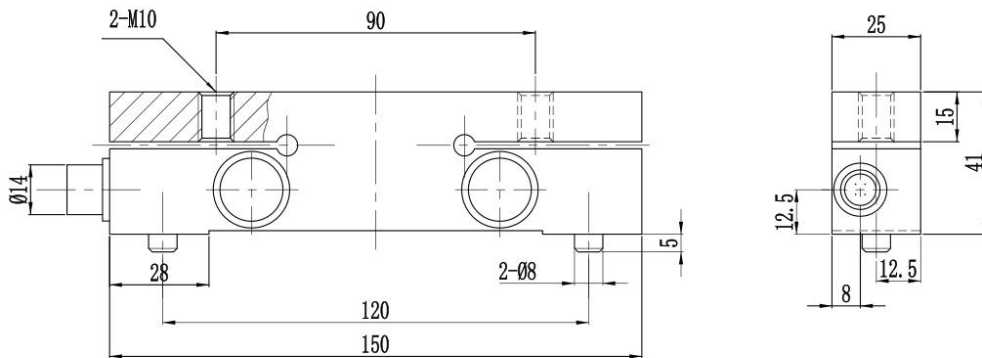
2.2 installation method



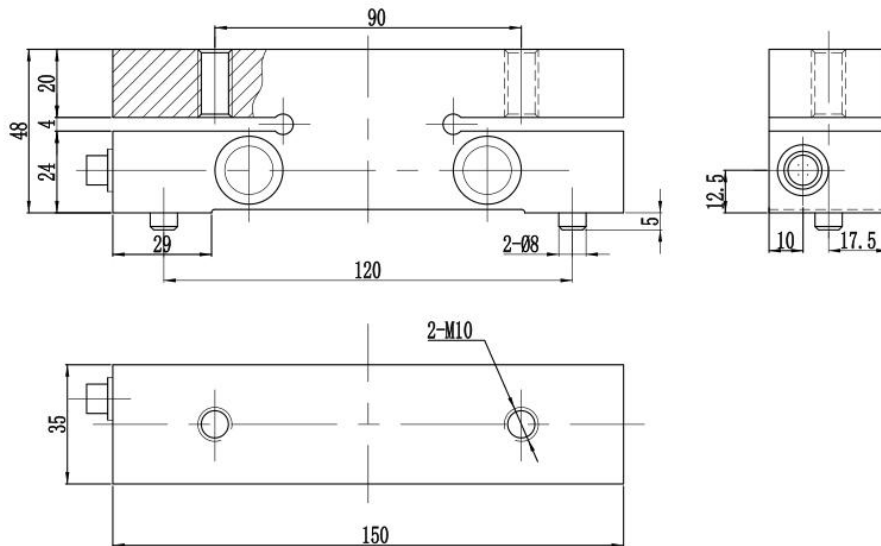
3. EWD-GD. Standard character “—” load sensor size and installation method

3.1 load sensor size

3.1.1 the rang is 1.5T size



3.1.2 the rang is 3T、5T size



3.2 installation method

