

## EWD-RL-BJ2 Villa elevator overload device Manual(V1.0)

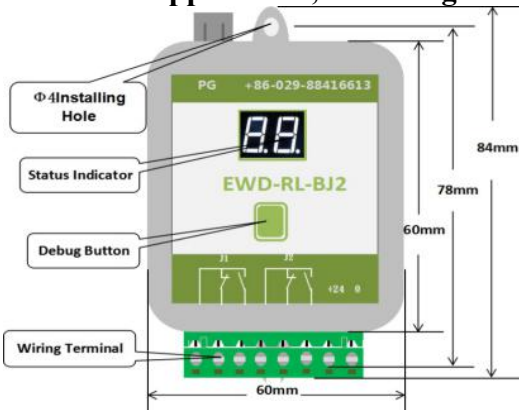
- **Declaration:**  
In any case, our part is only responsible for the product own quality within the warranty period.
- **Description:**
  - 1.State Indication — Flickering: About “Once per Second”;
  - 2.Button Operation — Press: Press and release soon; Hold: Press constantly;
  - 3.Relay — Keep the state of Picking-up in the period of system being .
- **Main Features:**
  - 1.The system is of the structure of sensor with the domination of loading cell and controller, which can be installed at the car-side rope hitch;
  - 2.Directly outputting full-load or overload signal depending on the change of elevator car payload;
  3. Simple adjustment, high precision of measurement and quick and easy installation.

● **Technical Specifications:**

1	<b>Application Range</b>	Being applicable to all villa elevators with payload of 500 kg ~ 20000 kg for light load and overload signal ( Depending on load sensor )
2	<b>Sensitivity</b>	For the elevator with rated load of 1 ton, it is 5Kg
3	<b>System Error</b>	≤1.5%(5~40℃)
4	<b>Output Mode</b>	Switching Signal: light load and overload Dynamic Close and Dynamic Open contact
5	<b>Operation Temperature</b>	-25~55℃
6	<b>Power Source</b>	DC 24V(±10%), Operating current for the whole set≤100mA

●\*: Intensity exceeding the above listed parameter limits may cause the system abnormality or its permanent damage.

● **Product Appearance, Installing Method and Relevant Structure**

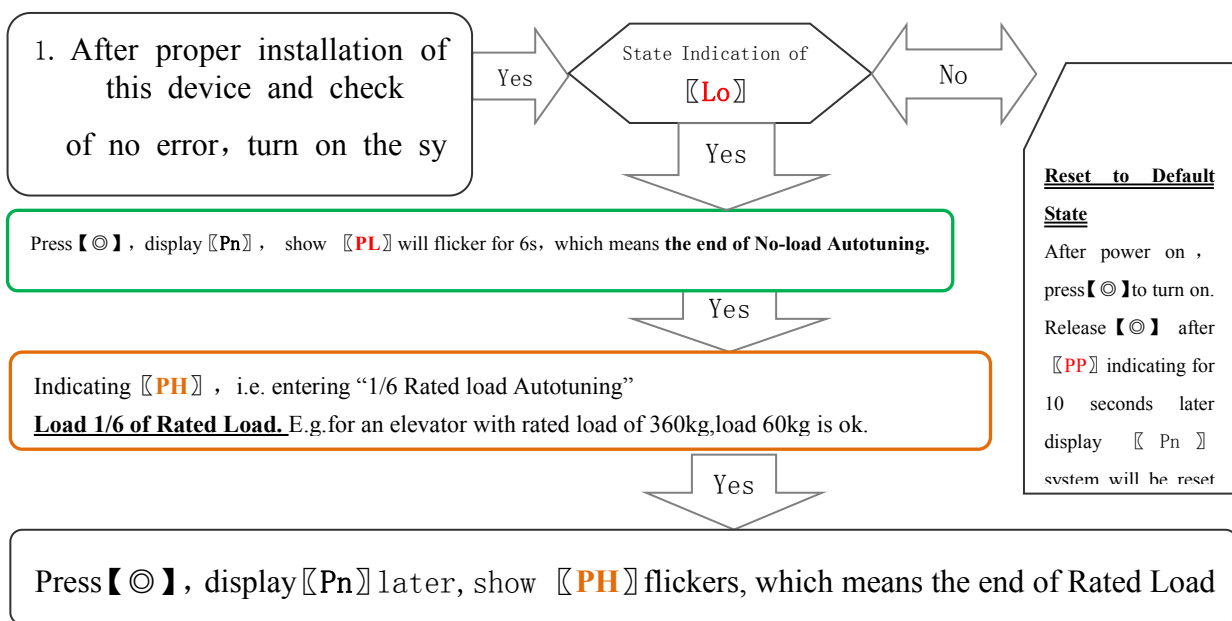


The code description of the normal work of the digital tube		
PG	Connect load sensor	
	Button, use for adjust	
Status indication	L0	No adjust
	J0	Current load < 4.5%, Rated load (J1, J2 relay is released)
	J1	Current load ≥ 4.5%, Rated load (J1 relay closed)
	J2	over load Indicator light (J2 relay closed)
PJ.1~3	J1 Rated load output	
PJ.4~6	J2 Over load output	

● Sensor selection and installation:

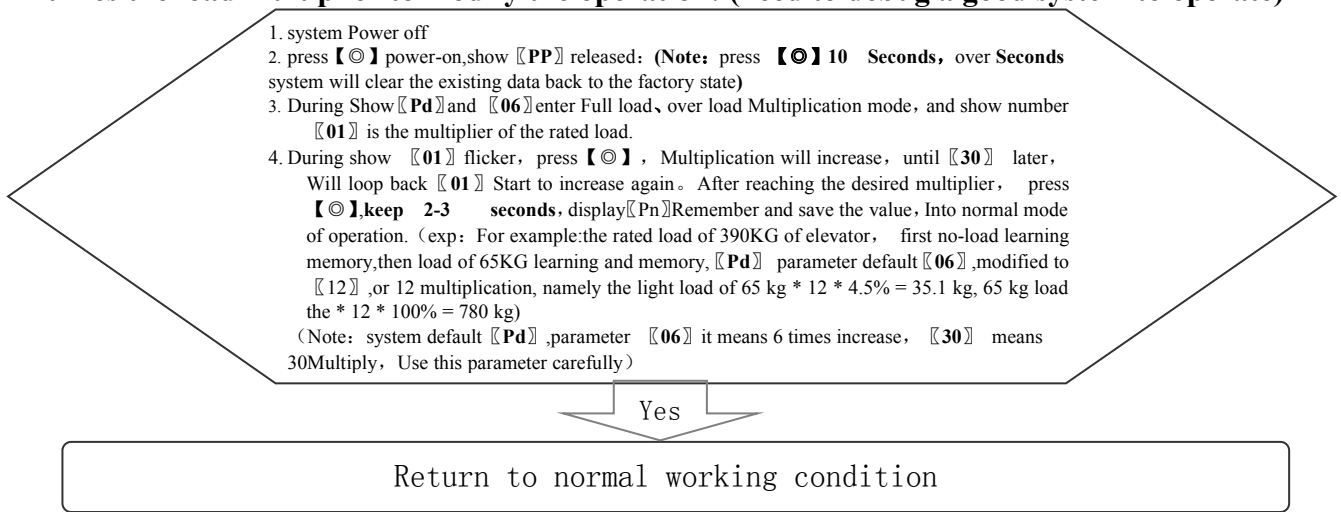
Load sensor					
Model	XYL-5H (or EWD-A34)	XYL-5H/501 8-15KN	XYL-2/M	EWD-20E	EWD-25E
Dimensions	See photo	See photo	See photo	See photo	See photo

● System Adjustment:



After the system debugging is completed, during normal operation, press and hold [C], [[J1]] / J2 alternately flashing, while J1 / J2 alternately output.

● times the load multiplier to modify the operation: (need to debug a good system to operate)



● Description of Other Indication States:

	Display Code	Implication	Solution
1	YS	System Startup	
2	PC	Sensor Resetting	
3	PP	Get into the status of operation parameters modification	
4	Lo	Ready for Autotuning Operation	
5	PL	No payload is detected by sensor	(Static Displaying represents preparative status, twinkling displaying for the end of testing)
6	PH	Self - learning parameters	
7	Pn	Memory is complete	

● **Promise**

1. If this system appears any quality problem of product itself in 1 year after delivery, it will be replaced freely (damage of the product seal will not be dealt with) .
2. Any system abnormality in adjustment or operation, please contact our company directly.

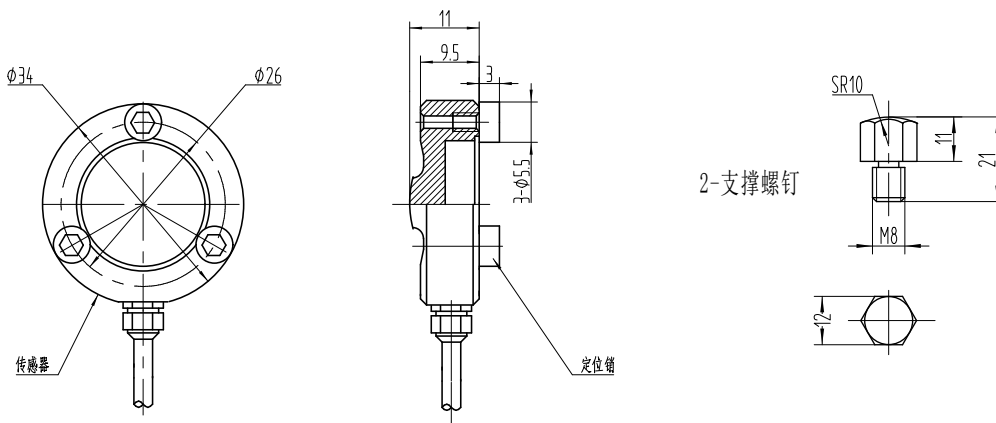
● **Others**

<b>Packing List</b>	Controller of EWD-RL-BJ2	1	Load sensor and accessories	1Set
	Elevator Loading Device			
	Screw Sets M4 X 40	2 Sets	System Instruction Manual	1 Copy

**Attached document:**

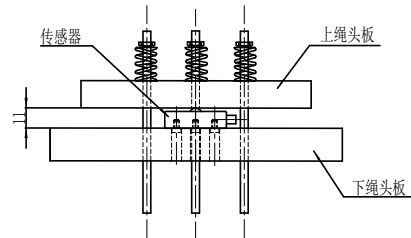
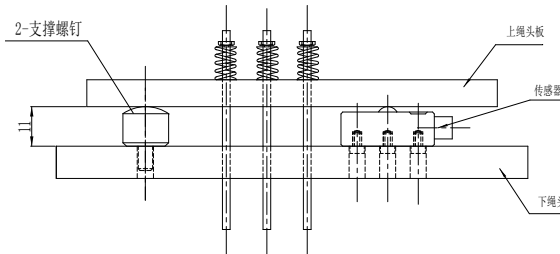
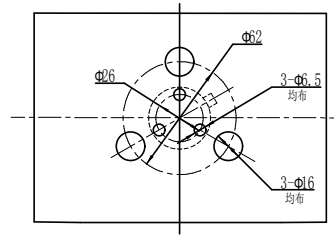
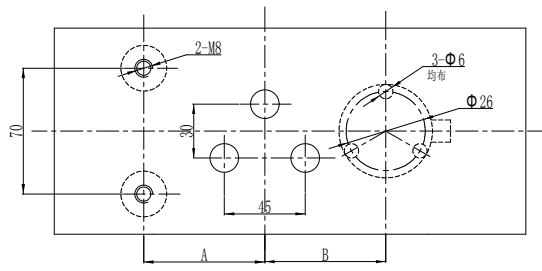
**Load cell / tension sensor dimensions and installation**

1. XYL-5H(or EWD-A34)load sensor dimensions:



Installation diagram 1

Installation diagram 2

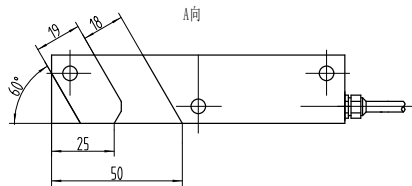
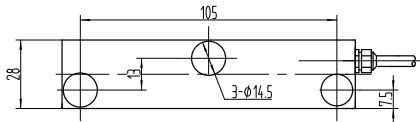
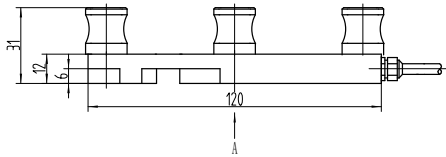


注意：用户自制夹板时，A距离应等于B距离。

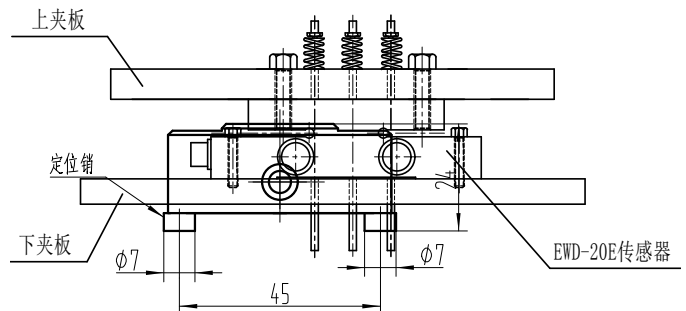
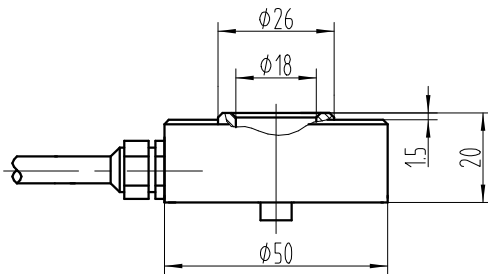
2. XYL-5H/5018-15KN load sensor dimensions:

安装示意图 (略)

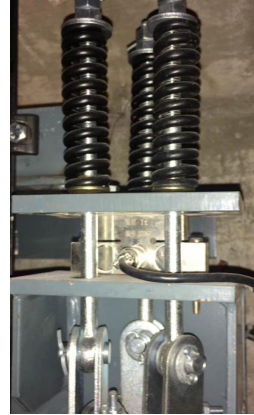
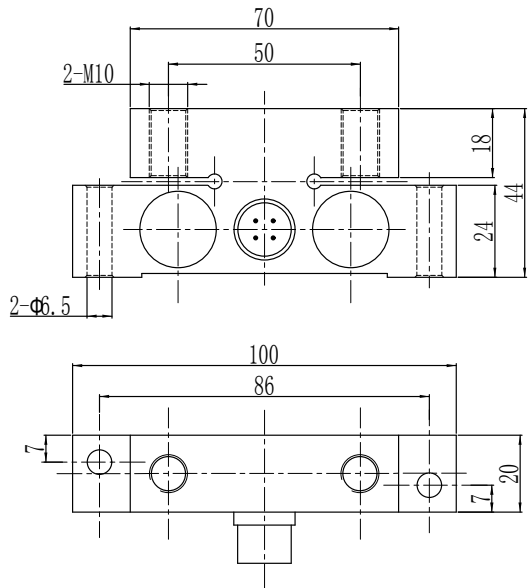
3. XYL-2/M 型传感器尺寸图



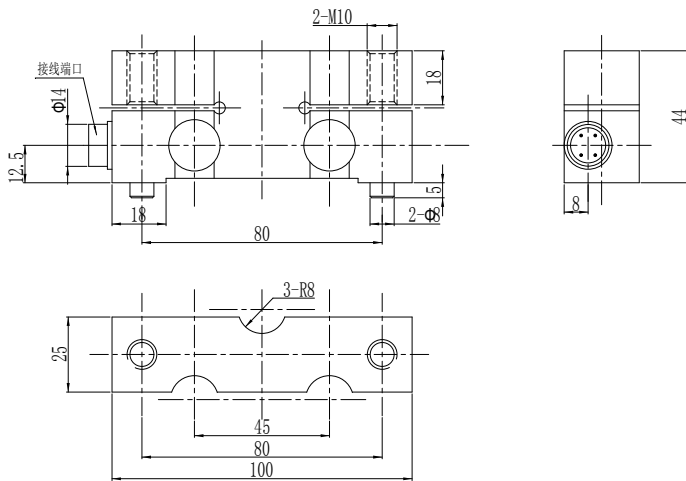
安装示意图  
安装示意



4. EWD-20E外形尺寸



5. EWD-25E外形尺寸



安装示意图

